



Essential Validation Services



Sample:

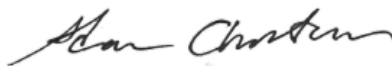
Client: | SunRose Aromatics
Sample: | Holy Basil (Ocimum sanctum)
Batch # | H50kSbi0418
Cas Number | 91845-35-1
Type: | Essential Oil

Conclusion:

- No adulterants, diluents, or contaminants were detected via this method.
- This oil meets the expected profile for genuine essential oil of Holy Basil (Ocimum sanctum).



X



Validated By:

Essential Validation Services

747 SW 2nd Ave, Gainesville, FL 32601

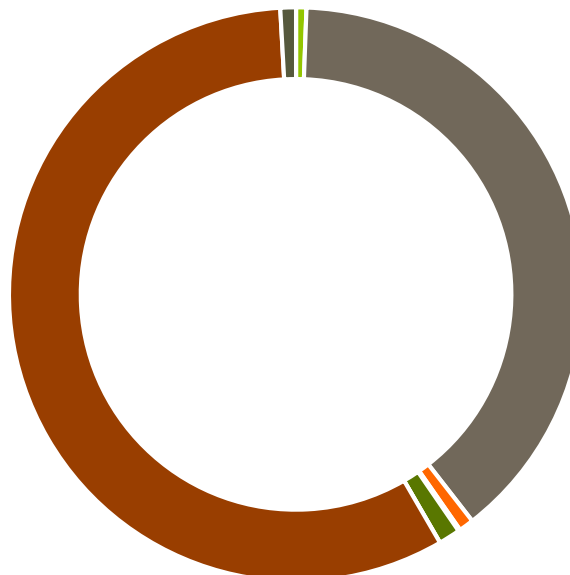
Phone: 317-361-5044 E-mail: Adam@essentialvalidationservices.com

Summary of Analyses

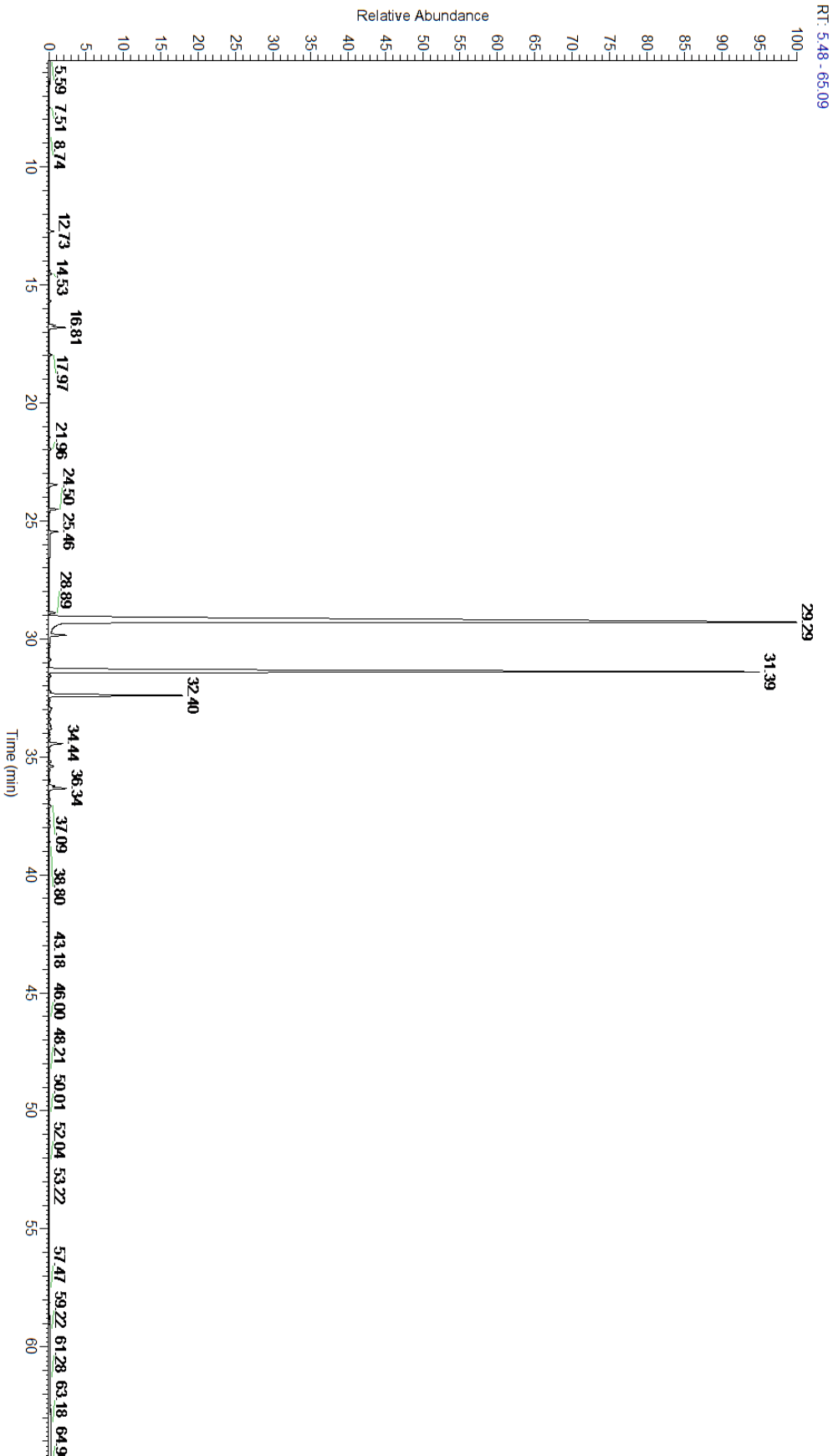
A fresh sample of Holy Basil (Ocimum sanctum) Essential Oil (10 uL in .5to.5 mL Hexane + ETOH) was prepared and analyzed via split injection GC/EI-MS.

Main Compounds	Percentages
Eugenol	57.16%
beta-Caryophyllene	32.67%
alpha-Humulene	4.60%
Caryophyllene oxide	0.61%
1,8-Cineole	0.54%
alpha-Copaene	0.52%
delta-Cadinene	0.51%
Methyl chavicol	0.32%
Geraniol	0.30%

Monoterpenes	Sesquiterpenes	Monoterpenols	Sesquiterpenols	Ketones
0.58%	38.90%	0.84%	0.07%	0.03%
Esters	Ethers	Aldehydes	Phenols	Other
0.00%	1.22%	0.00%	57.48%	0.88%



- Monoterpenes ■ Sesquiterpenes ■ Monoterpenols
- Sesquiterpenols ■ Ketones ■ Esters
- Ethers ■ Phenols ■ Other



www.SunRoseAromatics.com

Total Percentage		99.12%			
Peak Number	RT	Area %	Compound Name	RI	Chemical Family
1	12.73	0.14%	alpha-Pinene	936.10	Monoterpene
2	14.40	0.02%	Sabinene	973.00	Monoterpene
3	14.53	0.08%	beta-Pinene	974.00	Monoterpene
4	15.69	0.06%	alpha-Phellandrene	1002.00	Monoterpene
5	16.53	0.01%	para-Cymene	1024.30	Monoterpene
6	16.71	0.18%	Limonene	1029.50	Monoterpene
7	16.81	0.54%	1,8-Cineole	1031.80	Monoterpene Ether
8	17.97	0.09%	gamma-Terpinene	1054.00	Monoterpene
9	19.64	0.03%	Linalool	1099.00	Monoterpenol
10	21.45	0.03%	Camphor	1147.55	Monoterpene Ketone
11	21.96	0.07%	Isoborneol	1159.70	Monoterpenol
12	23.47	0.32%	Methyl chavicol	1193.40	Phenylpropanoid
13	24.50	0.25%	Citronellol	1229.25	Monoterpenol
14	25.46	0.30%	Geraniol	1255.29	Monoterpenol
15	28.89	0.19%	alpha-Cubebene	1355.71	Sesquiterpene
16	29.29	57.16%	Eugenol	1365.89	Phenylpropanoid
17	29.85	0.52%	alpha-Copaene	1379.00	Sesquiterpene
18	30.16	0.01%	beta-Elemene	1389.20	Sesquiterpene
19	31.39	32.67%	beta-Caryophyllene	1427.14	Sesquiterpene
20	31.57	0.06%	gamma-Elemene	1434.00	Sesquiterpene
21	32.23	0.05%	cis-Muurola-3,5-diene	1456.75	Sesquiterpene
22	32.40	4.60%	alpha-Humulene	1461.43	Sesquiterpene
23	33.02	0.05%	gamma-Murolene	1478.86	Sesquiterpene
24	33.40	0.05%	beta-Selinene	1487.57	Sesquiterpene
25	33.67	0.07%	alpha-Selinene	1492.50	Sesquiterpene
26	33.81	0.12%	(E,E)-alpha-Farnesene	1508.14	Sesquiterpene
27	34.44	0.51%	delta-Cadinene	1524.14	Sesquiterpene
28	35.21	0.07%	Elemol	1538.00	Sesquiterpenol
29	35.40	0.15%	Italicene epoxide		
30	36.23	0.19%	Caryophyllenyl alcohol	1570.00	Monoterpenol
31	36.34	0.61%	Caryophyllene oxide	1594.86	Sesquiterpene Ether
32	37.09	0.07%	Humulene epoxide II	1606.43	Sesquiterpene Ether

ESSENTIAL VALIDATION SERVICES | 747 SW 2nd AVE GAINESVILLE, FLORIDA 32601 | 317-361-5044